

**SUBDIVISION PLAN OF LOT 1 SECTION 28 TOWNSHIP 7
NEW WESTMINSTER DISTRICT PLAN BCP43682**

PLAN BCP

B.C.G.S. 92G.007

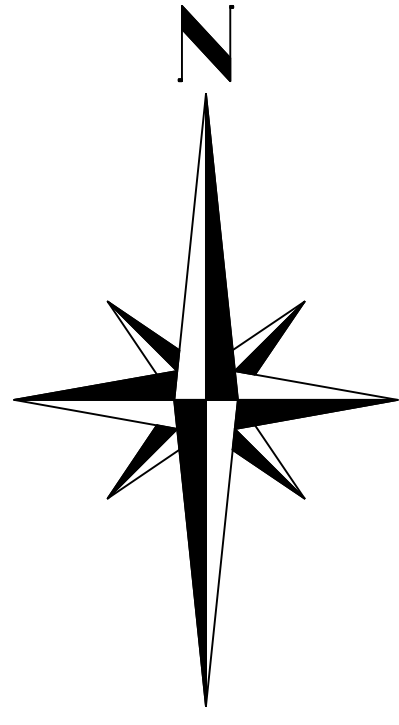
Deposited in the Land Title Office
at New Westminster B.C. on
This _____ Day of _____, 2012

All Distances are in Metres.
The intended plot size of this plan is
560mm in width by 864mm in height
(D size) when plotted at a scale of 1:1000

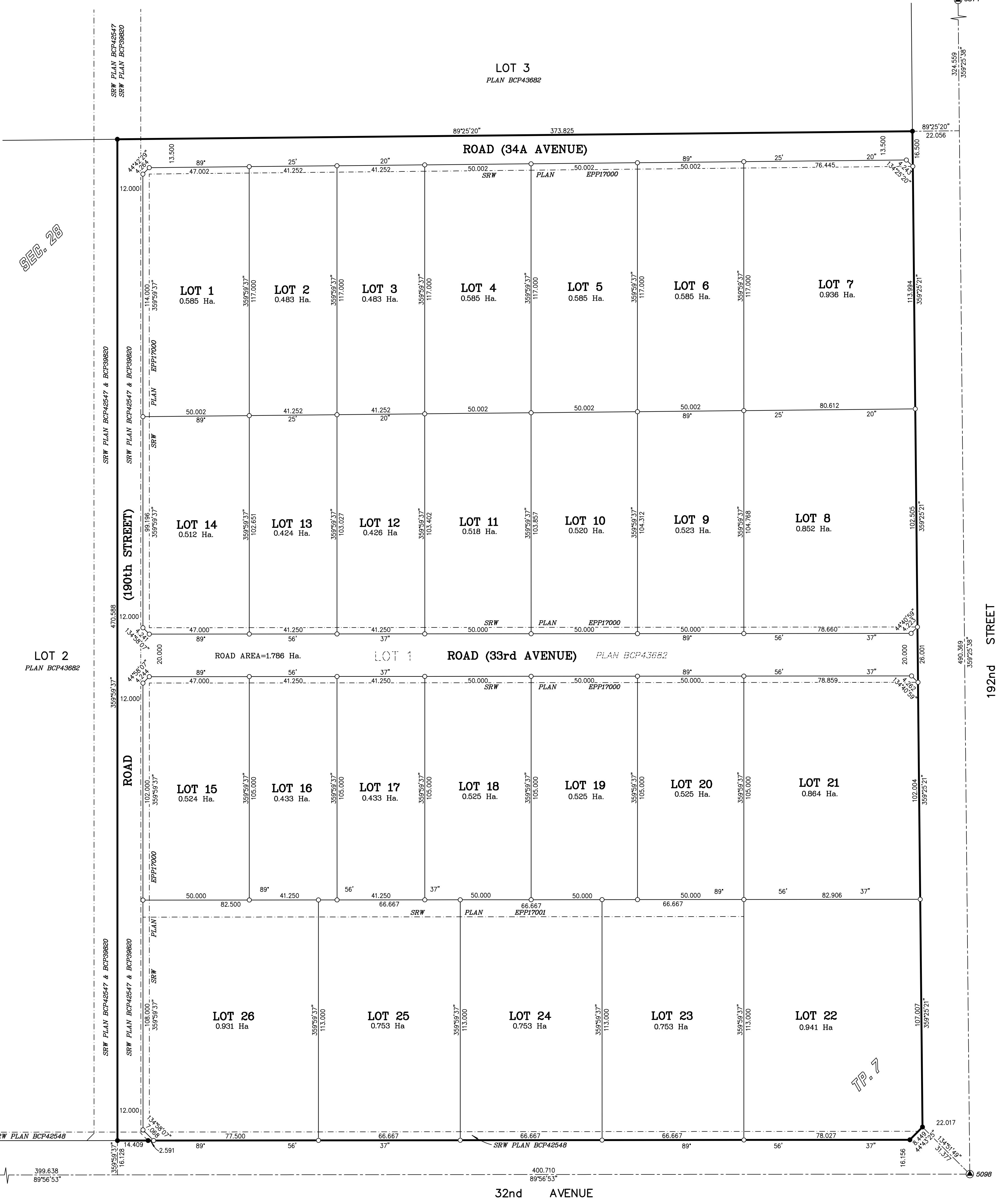
LEGEND:
 ● Denotes Control Monument found.
 ● Denotes Standard Iron Post found.
 ○ Denotes Standard Iron Post set.

Grid Bearings are derived from
observations between Geodetic
Control Monuments 5098, 5874 & 5876

Note:
This plan shows one or more witness posts
which are set along the production of the
property boundary unless otherwise noted.



Ref. No. _____ Registrar



OWNER: CITY OF SURREY

Authorized Signatory: Acting Manager,
Realty Services Division; Nicholas Rawcliffe

Authorized Signatory
City Clerk; Jane Sullivan

Witness as to Signature of City Clerk

Address of Witness

Occupation of Witness

Approved under The Land Title Act
This _____ day of _____, 2012

Approving Officer for the
City of Surrey

I, John P. Underwater, a British Columbia Land Surveyor, of
Cloverdale in British Columbia, certify that I was present at
and personally supervised the survey represented by this
plan, and that the survey and plan are correct. The field
survey was completed on the 8th day of December, 2011
The plan was completed and checked, and the checklist
filed under #130883, on the 8th day of December, 2011

**Integrated Survey Area No. 1
City of Surrey, NAD83 (CSRS)**
This plan shows horizontal ground-level
measured distances except where otherwise
noted. To compute grid distances,
multiply ground-level distances
by combined factor 0.9996020.

Underwater Land Surveying Ltd.
B.C. Land Surveyors
#104-5830 176A Street
Cloverdale B.C.

*This Plan Lies Within The
Greater Vancouver Regional District*

John Underwater